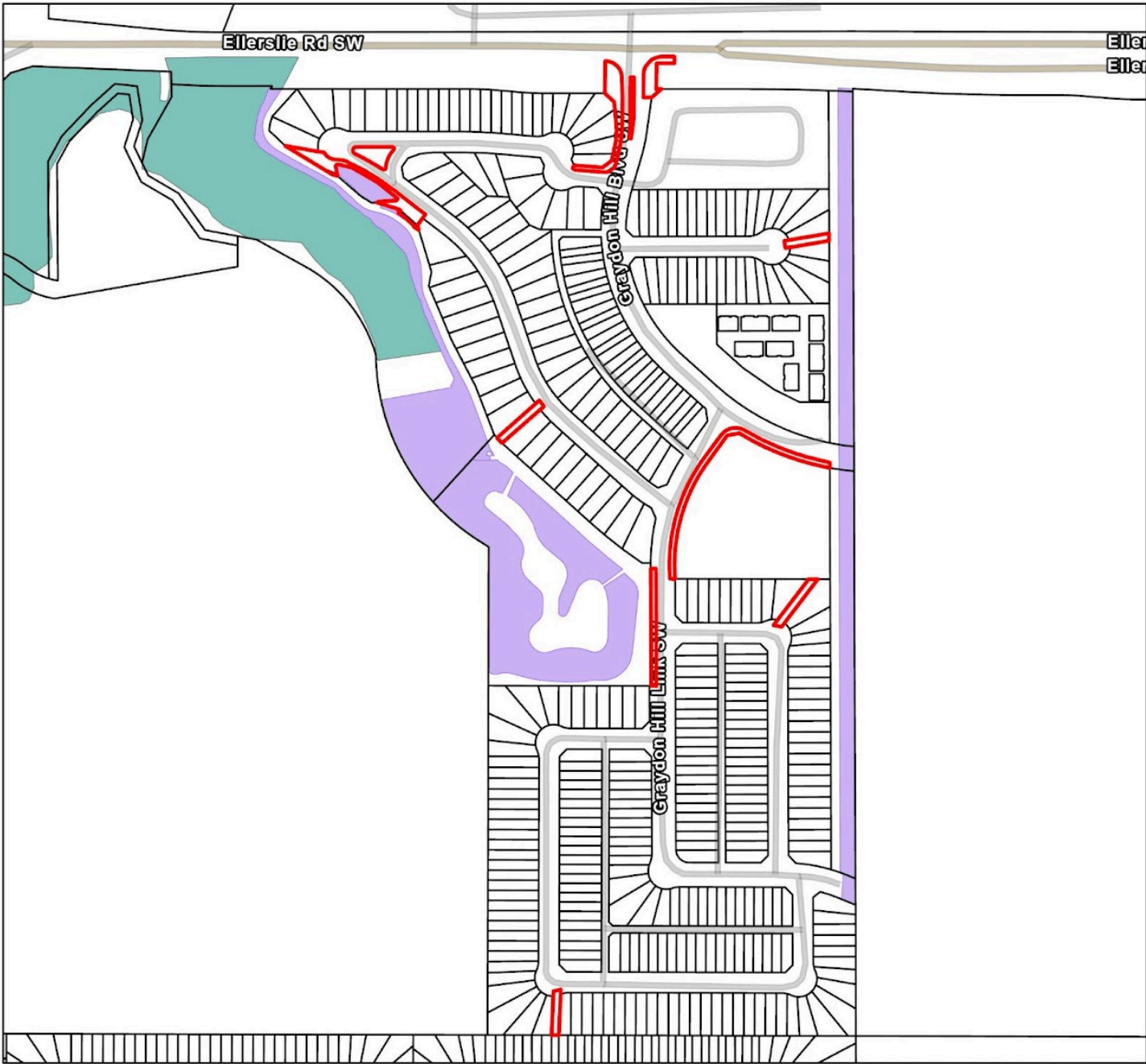





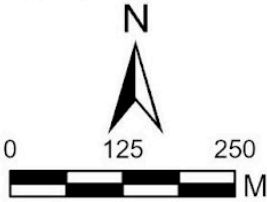
SCHEDULE "A"
CITY LAND



Esri Community Maps Contributors, City of Edmonton, Esri Canada, Esri, TomTom, Garmin, SafeGraph, GeoTechnologies, Inc, METI/NASA, USGS, EPA, US Census Bureau, USDA, NRCan, Parks Canada

Legend

-  City Land to be maintained by the Organization
-  Natural Areas
-  Naturalized Areas



SCHEDULE "B"**Base Level Maintenance****TURF****Turf Mowing Cycles:**

- Metropolitan and District Parks are mowed every 7 to 10 days
 - Premiere Sports Fields within Metropolitan or District Parks are mowed weekly
- All other community parks are mowed every 10 - 18 days
- Mowing includes trimming (weed whacking) around or along fence lines and objects.

Undeveloped Areas:

- Mowed every 5-6 weeks.

All areas that contain trees, aside from Undeveloped Areas, will receive two cycles per year to trim around trees.

HORTICULTURE**Shrub beds located Downtown:**

- Servicing 11 times per season including mechanical weed control, pruning, mulching and litter collection.
- Chemical weed control may be applied where appropriate

Shrub beds located in high profile areas such as City and District Parks, Recreation Centre/Attractions and within Business Improvement Areas:

- Servicing five times per season including mechanical weed control and litter collection
- Pruning during the summer season only occurs for safety and accessibility
- Chemical weed control may be applied where appropriate and resources allow
- Mulching occurs in the shoulder seasons on an as-needed basis, as resources allow

Shrub beds located in roadways, parks and neighbourhoods:

- Servicing two times per season including mechanical and chemical weed control and litter collection.
- Pruning during the summer season only occurs for safety and accessibility
- Chemical weed control may be applied where appropriate and resources allow
- Mulching occurs in the shoulder seasons on an as-needed basis, as resources allow

In-ground annual flower beds around the City receive service 11 times per season, includes:

- Bed preparation, planting, and weeding, along with dead-heading flowers and removal of the flowers from the beds at the end of the season.
- Flowers are watered two times per week, this schedule is adjusted based on weather.

Flower containers and hanging baskets are watered and cared for two times per week; schedule is adjusted based on weather.

CITY TREES

Boulevard and open space trees are pruned on a five year cycle, with the exception of conifers and trees prone to specific diseases.

- Trees prone to diseases such as black knot (*Apiosporina morbosus*) and *Dothiorella* elm wilt (*Dothiorella ulmi*) are pruned every four years.
- Conifers are not pruned by the City, unless there are explicit safety concerns as identified by an Urban Forester.

As per the Community Standards Bylaw, the City conducts pruning of elm trees between October 1st and March 31st. Exceptions may occur at the City's discretion. Urban Forestry does not conduct clearance pruning for non-safety related signage and/or businesses, as this is considered cosmetic.

Boulevard and open space trees are inventoried and are assessed for overall health and condition on a split cycle between east and west, rotating yearly, between June and October.

If a tree is deemed dead or in very poor condition, it will be marked for removal (painted with a pink dot on the trunk of the tree) and added to the list of trees to be removed and stump grinded.

- The City aims to remove trees within two years of being marked for removal. Trees scheduled for replacement in the upcoming planting season are prioritized for removal.

The City hires a crew of contracted water trucks and assigns works based on a cycle of predetermined watering frequencies. The crews are trained in a deep-root watering technique, which slowly delivers water to the root system. This watering is specific to newly planted trees for up to 3 to 5 years depending on the establishment period required.

NATURALIZED AREAS

No mowing or trimming is completed within Naturalized Areas. The City performs periodic site visits to check for noxious and prohibited weeds.

Planting of native trees, shrubs, and wild flowers in naturalized areas, along with assisting shrub beds in naturalization areas with maturing through stages of naturalization.

City maintenance of Naturalized Areas includes: 1.0m mow strips on each side of: shared-use paths/multi-use trails; and adjacent to the private property fence lines where it is safe to do so. Areas maintained by the City must be accessible by equipment and not wet or steeply sloped.

The City will remove hazardous branches or trees that have fallen into or are leaning over a maintained area (such as mowed turf or across a maintained path) as needed based on 311 notifications received.

NATURAL AREAS

Natural areas are inspected 4 times per year.

- During these inspections crews look for: illegal dumping, perform litter pickup, check for hazardous trees, illegal structures like forts or bike ramps, noxious weed infestations and encroachments.
- Natural Areas have dedicated mechanical weed removal teams that perform mechanical removal of weeds using a ranking system that takes into account the type of weed species, location, time of bloom or going to seed and other factors.
- Tree risk management is conducted along target areas within a 10 year cycle.

Natural Areas does not conduct clearance pruning for non-safety related signage and/or businesses, as this is considered cosmetic.

INTEGRATED PEST MANAGEMENT

- Two time routed regulated species control is provided in Naturalized Areas.
- One time routed regulated species control is provided for Stormwater Management Facilities.
- Regulated species in river valley natural areas are treated on demand at the request of the Natural Areas team.
- Cosmetic treatment of sports fields based on thresholds for playability and player safety.

All Alberta Legislated plants should be reported through 311 for management control through Integrated Pest Management.

SITE FURNISHINGS

The City provides routine preventative maintenance, repair and replacement of Site Furnishings (when required) on a 6 to 8 year cycle.

City Standards for park furniture are provided to aggregate benches and tables, heritage benches and Maglin metal benches/tables/waste receptacles.

PLAYGROUNDS

Playgrounds, outdoor fitness areas, skateparks and splash pads are inspected twice per month from April to October and once per month from November to March.

Preventative maintenance and identification of any deficiencies will be included during inspections. Deficiencies will be repaired at that time with tools and materials on hand and will be scheduled at a later date if required.

LITTER COLLECTION

Litter removal from garbage cans located in parks and trails twice per week from May to October. Litter is picked up once per week from November to April. An exception to this is the downtown core and district level parks which are on a daily schedule.

TRAIL MAINTENANCE

Hard surface trail sweeping occurs at the beginning of spring.

Periodic sweeping during spring/summer will occur if there is too much debris or sand.

Maintained hard surface and granular trails are pruned to have a buffer of 1 meter on either side and 3 meters above for the safety of trail users.

- River valley trails both hard and granular surface receive once annual trimming of grass or vegetation along sides of the trails.
- Granular Trails are monitored constantly and minor repairs to the wear layer or surface are made.

SNOW REMOVAL

Inventory adjacent to City facilities and the priority 1 bike route network is maintained to a bare pavement standard within 24 hours following the end of snowfall.

All other City maintained sidewalks, wheelchair ramps, shared pathways, priority 2 bike routes and parking lots, all season staircases, access to bus stops adjacent to City property, paved trails and pedestrian bridges are maintained to a safe and passable surface beginning at the end of snowfall completed within 72 hours following the end of snowfall.

Other manually cleared pathways and public amenities are maintained to a safe and passable surface within 13 days following the end of snowfall.